

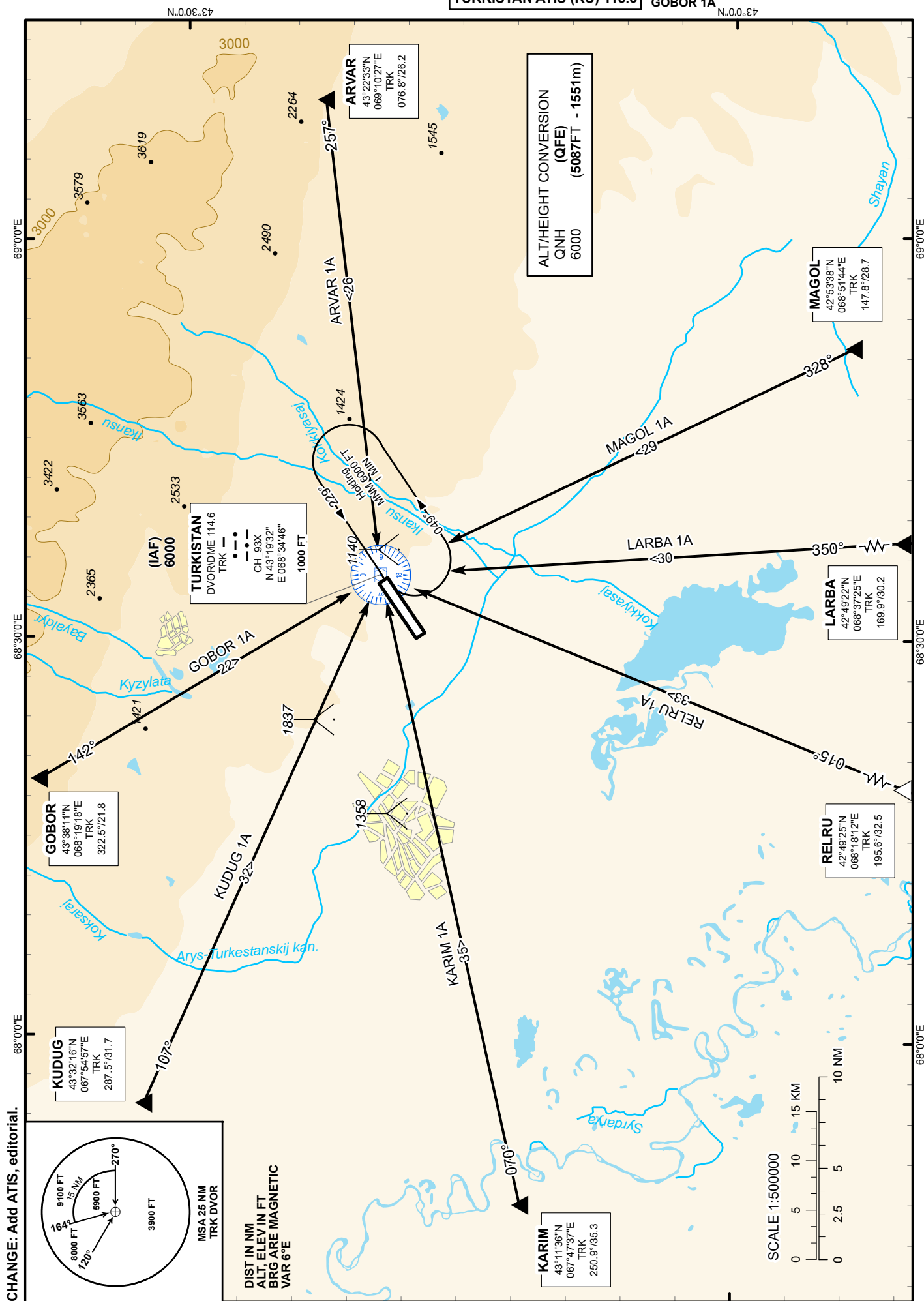
STANDARD ARRIVAL CHART
INSTRUMENT (STAR) - ICAO

TRANSITION ALTITUDE
10000 FT

TURKISTAN TOWER 131.3
TURKISTAN ATIS (EN) 124.4
TURKISTAN ATIS (RU) 118.3

ARVAR 1A, MAGOL 1A,
LARBA 1A, RELRU 1A,
KARIM 1A, KUDUG 1A,
GOBOR 1A

TURKISTAN
RWY 05



STANDARD ARRIVAL ROUTES – INSTRUMENT (STAR) TURKISTAN RWY 05
ARVAR 1A After crossing ARVAR (R076.8° D26.2 TRK) proceed on track 257° to TRK. Cross ARVAR at 7000 or above. Cross TRK at 6000.
MAGOL 1A After crossing MAGOL (R147.8° D28.7 TRK) proceed on track 328° to TRK. Cross MAGOL at 7000 or above. Cross TRK at 6000.
LARBA 1A After crossing LARBA (R169.9° D30.2 TRK) proceed on track 350° to TRK. Cross LARBA at 7000 or above. Cross TRK at 6000.
RELRU 1A After crossing RELRU (R195.6° D32.5 TRK) proceed on track 015° to TRK. Cross RELRU at 7000 or above. Cross TRK at 6000.
KARIM 1A After crossing KARIM (R250.9° D35.3 TRK) proceed on track 070° to TRK. Cross KARIM at 7000 or above. Cross TRK at 6000.
KUDUG 1A After crossing KUDUG (R287.5° D31.7 TRK) proceed on track 107° to TRK. Cross KUDUG at 7000 or above. Cross TRK at 6000.
GOBOR 1A After crossing GOBOR (R322.5° D21.8 TRK) proceed on track 142° to TRK. Cross GOBOR at 9000 or above. Cross TRK at 6000.